

pls remember the possible staff address Romantic tradition. Though each poet has a clear voice, both

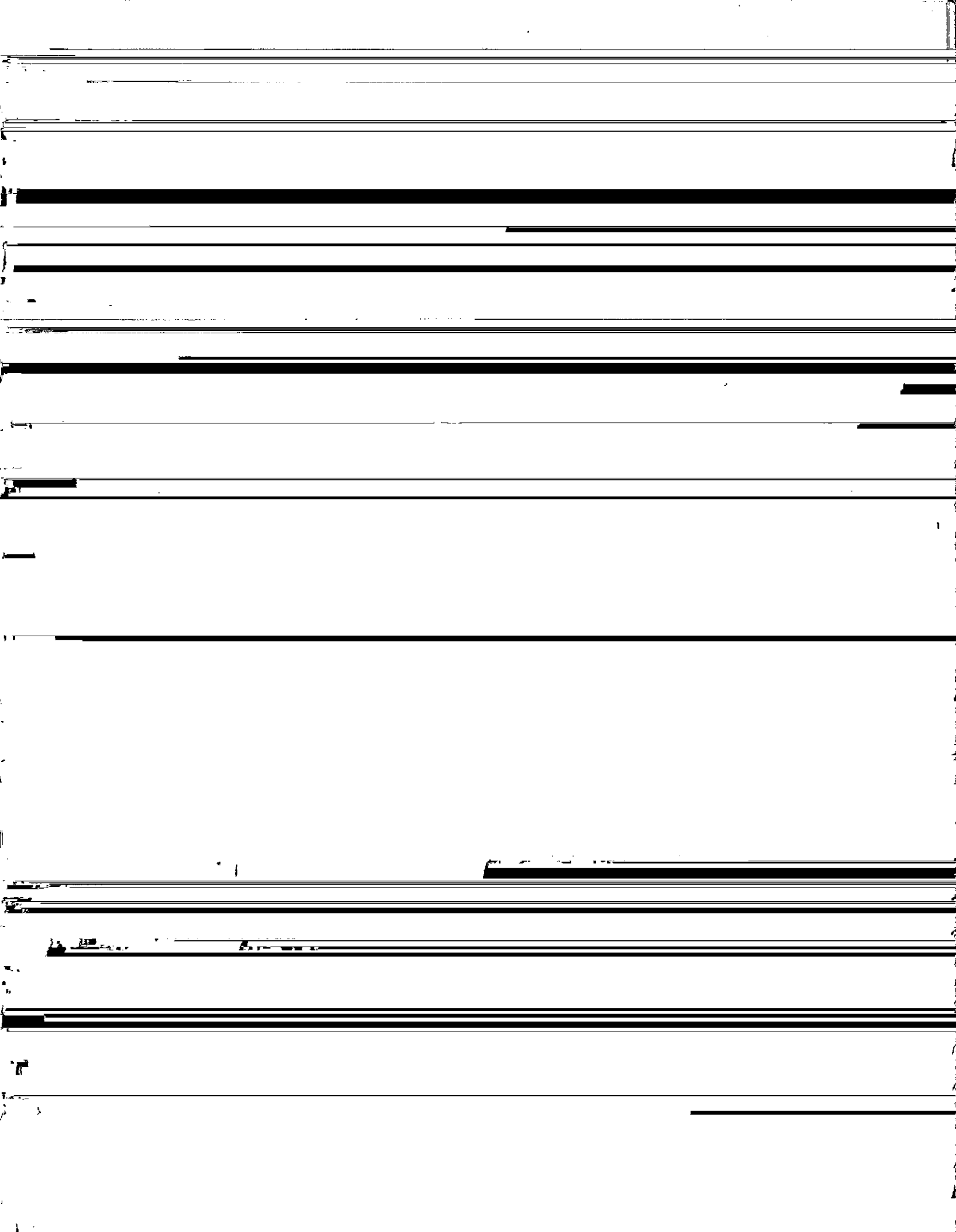
★ ★ ★ **NONFICTION** ★ ★ ★

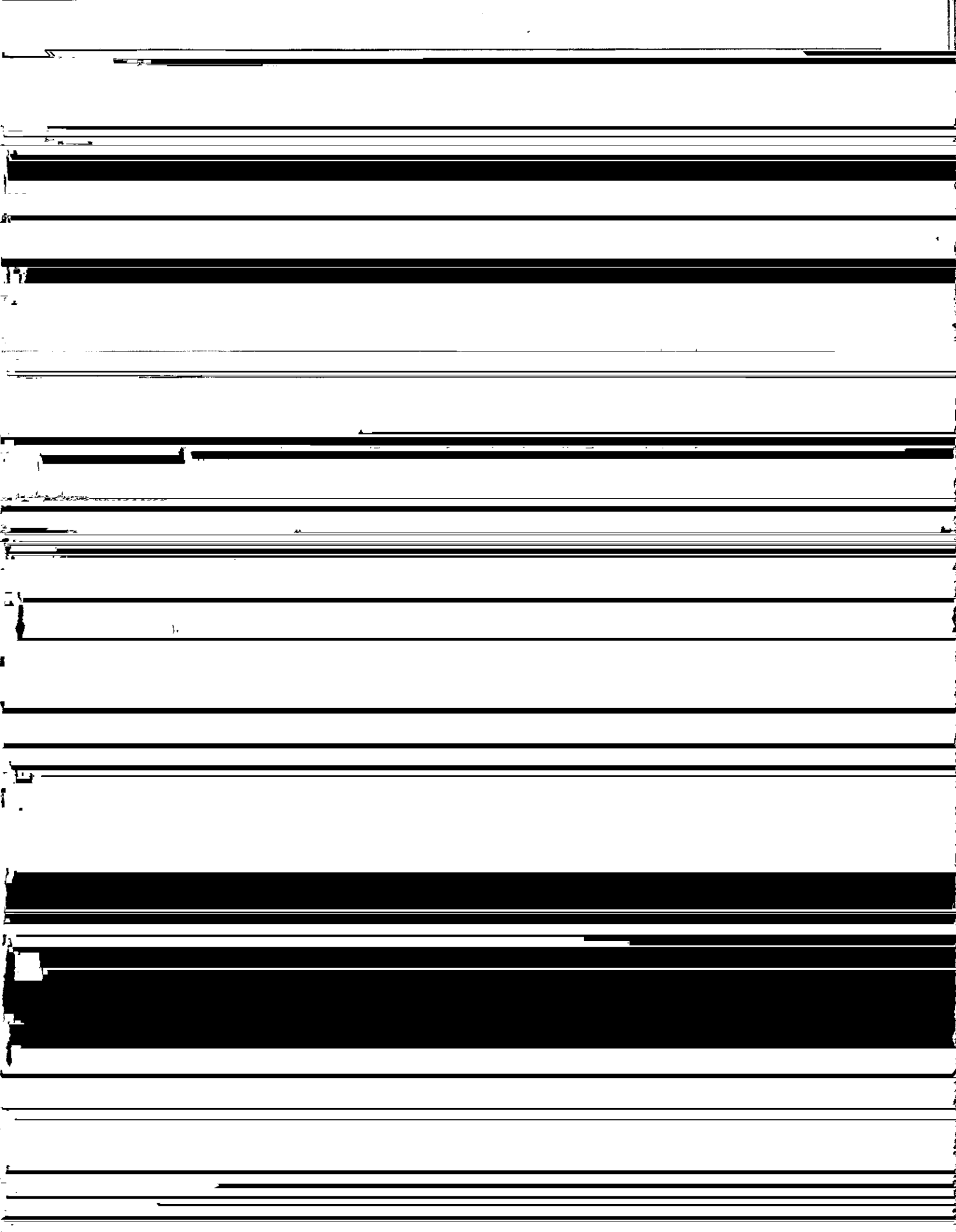
BIOGRAPHY

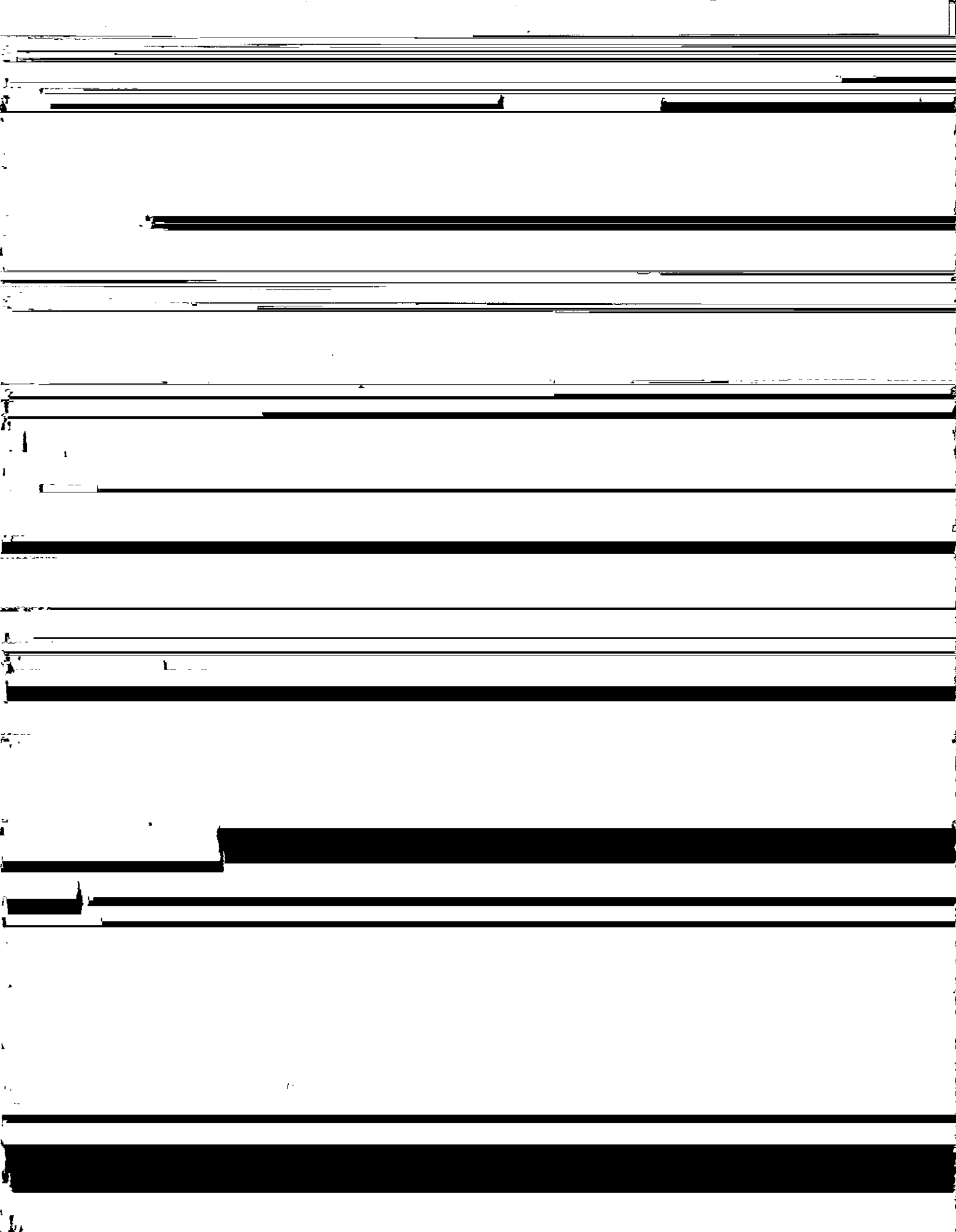
tifying the distinctly Texas traits found in the land and the character of its people. His scenes range from serious commentary to humorous satires. Depictions of working men in factories or lumber mills bear a strong affinity with the murals of his close friend, Diego Rivera. Bywaters was an art professor at SMU for twenty years, a curator of countless shows in the state, and a

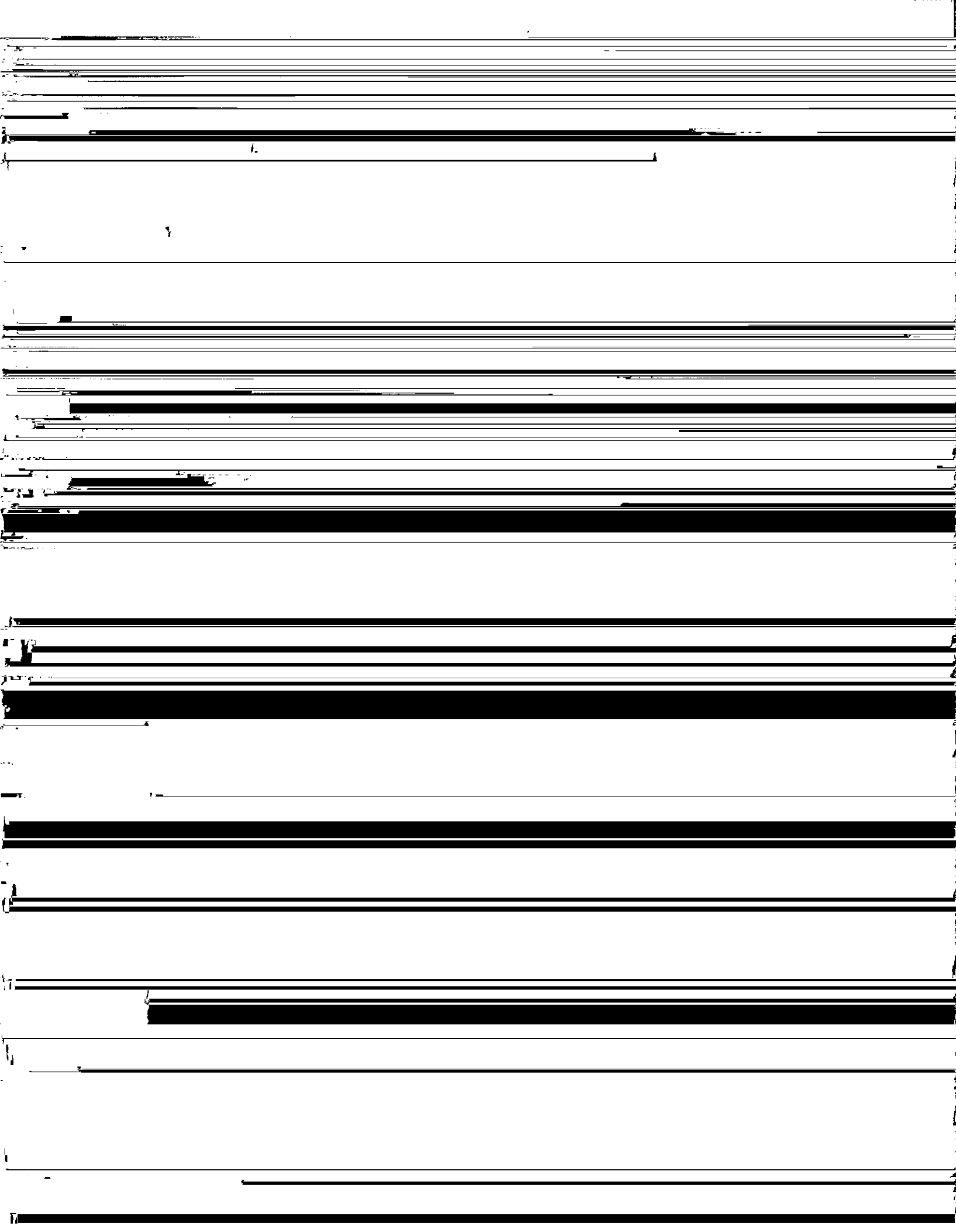
Jerrold Ladd came from the filth and crime-ridden projects of West Dallas. His indomitable spirit, fanned by a desire for

Towery, Ken. THE CHOW DIPPER: A PERSONAL AND POLITICAL ODYSSEY. Austin: Eakin Press, 1994, 492p. Il-









... of the

... ..

... ..

... ..

... ..

... ..

... ..

... ..

... ..

... ..

... ..

... ..

... ..

... ..

... ..

... ..

... ..

... ..

... ..

... ..

... ..

... ..

... ..

... ..



[The main body of the page contains multiple lines of text that have been almost entirely obscured by heavy black redaction bars. Only a few faint, illegible characters are visible through the bars.]