

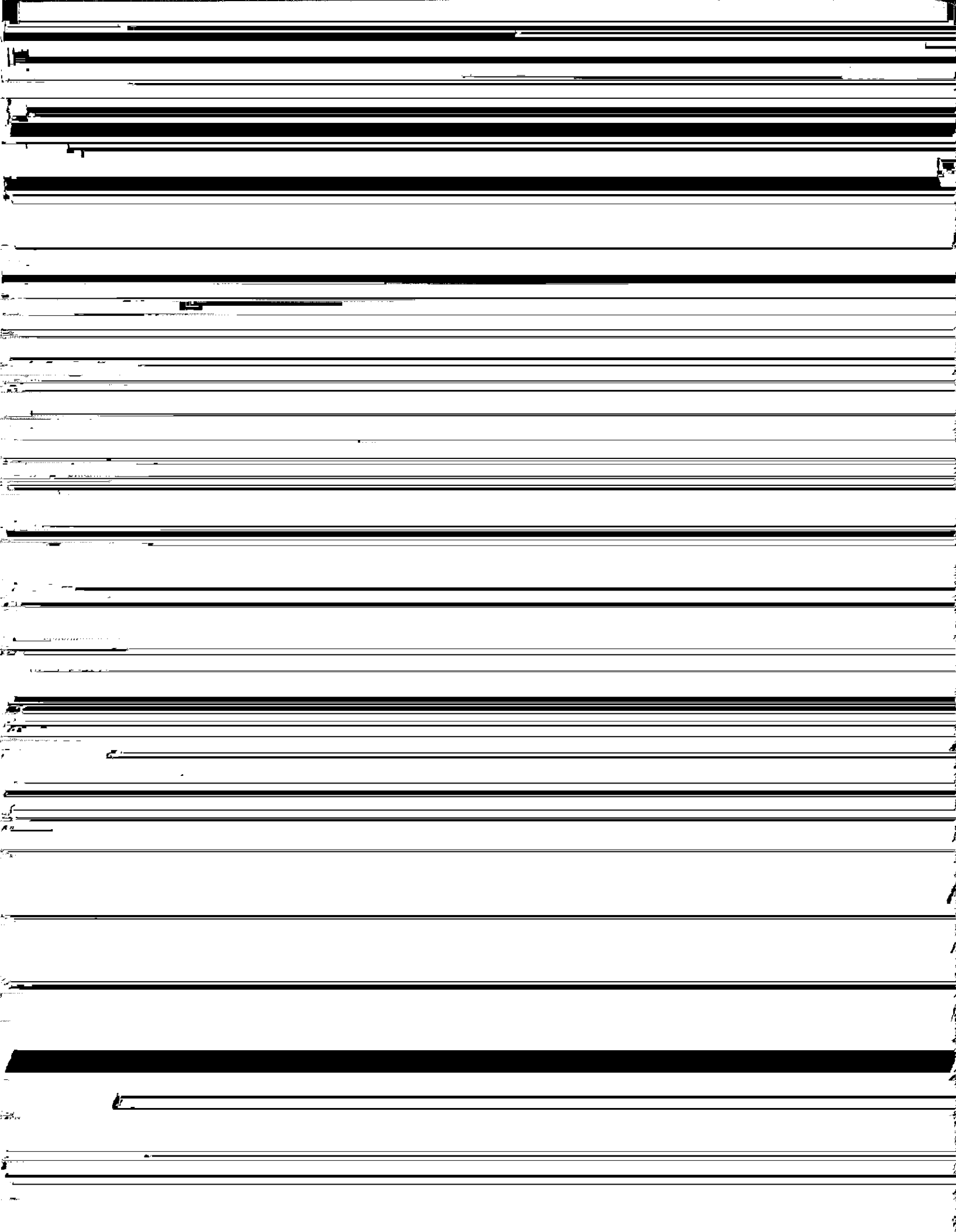


Continued from page two
that may place the *cabala* of McCarthy's text

Dark Card

By [REDACTED]





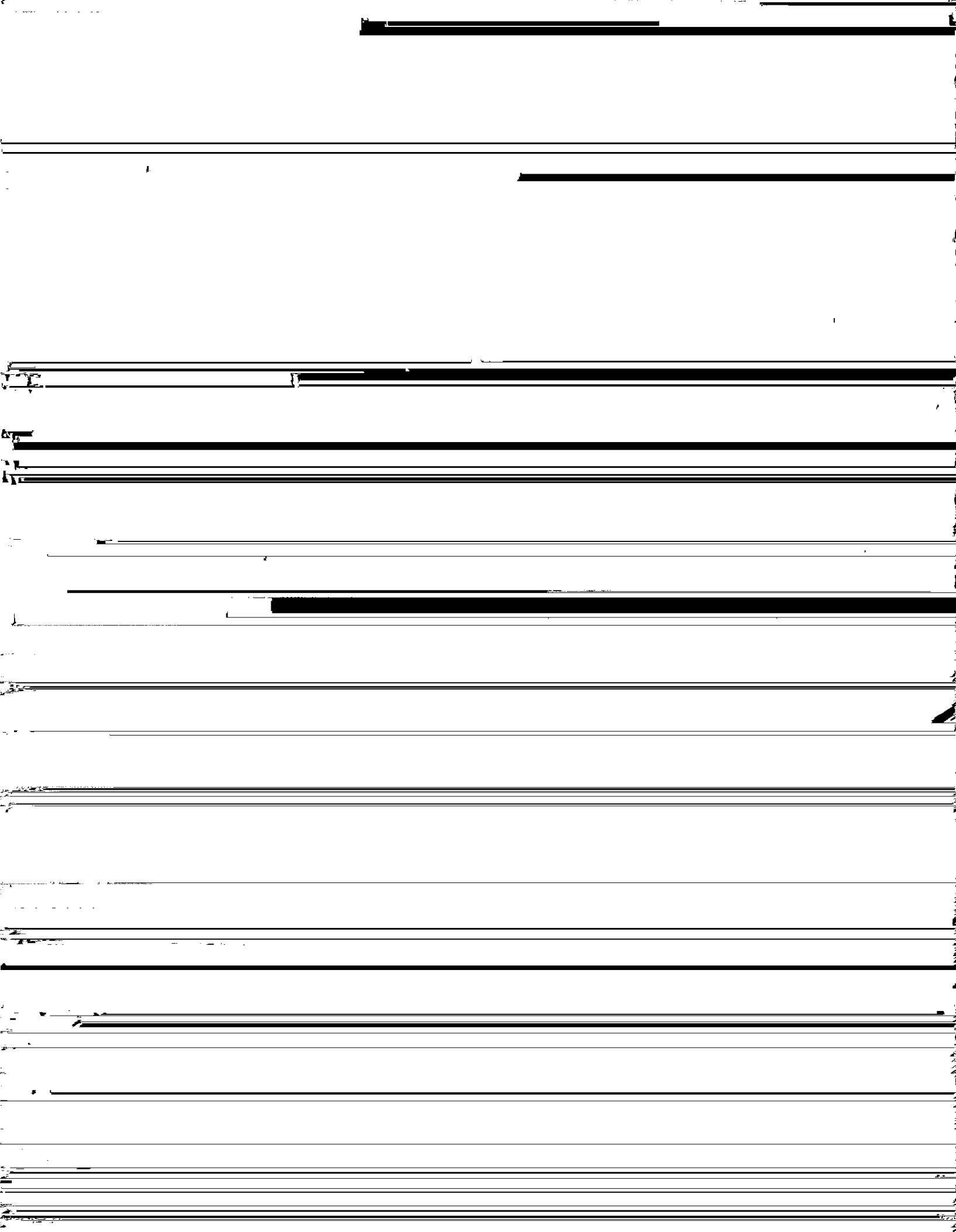
REVIEW OF TEXAS BOOKS

1960

[The following text is heavily obscured by horizontal black bars and is largely illegible.]

REVIEW OF TEXAS BOOKS

John Rinao King of the Texas Woman of Letters:



REVIEW OF TEXAS BOOKS

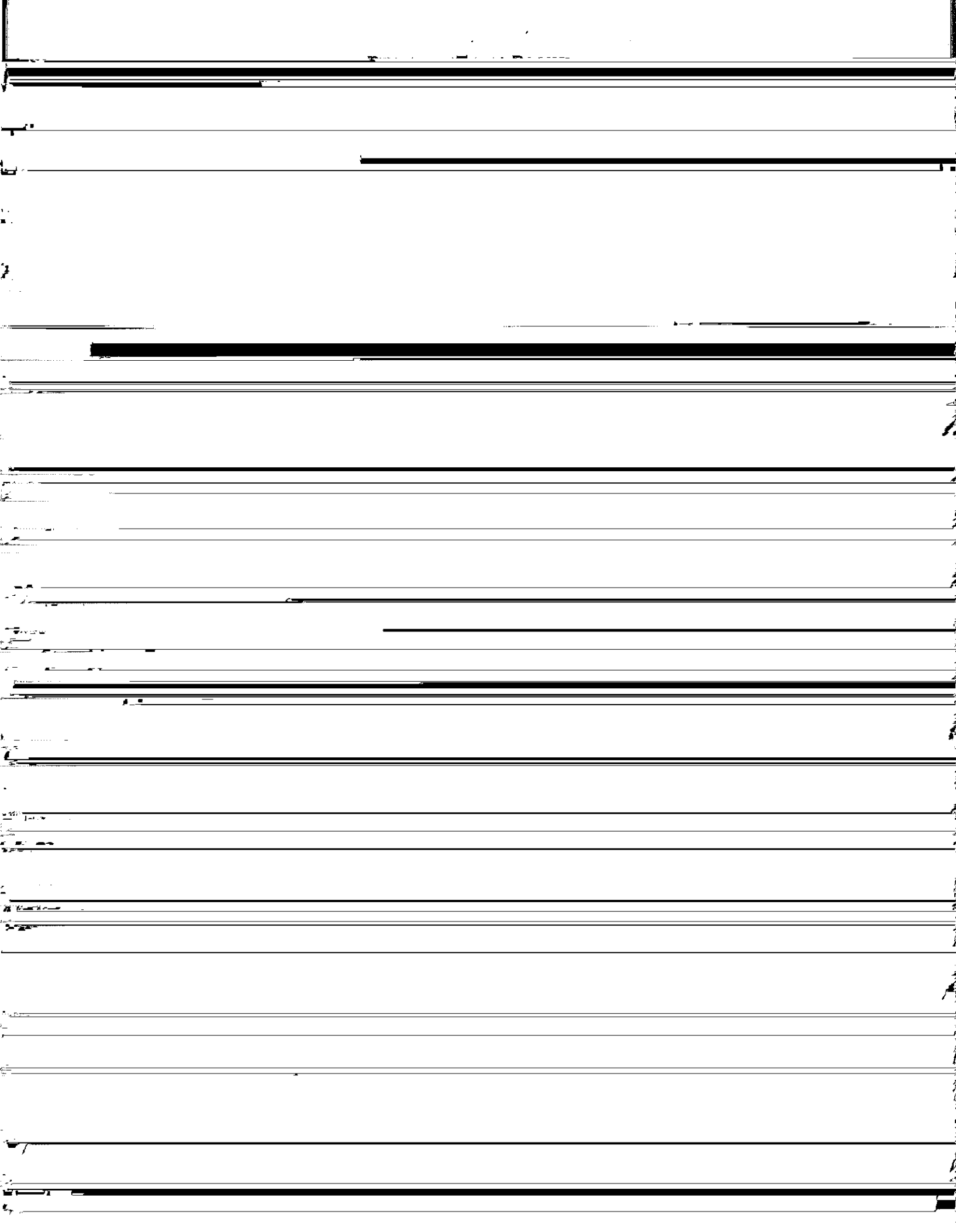
REVIEW OF TEXAS BOOKS

Another Lesson in Working Together and

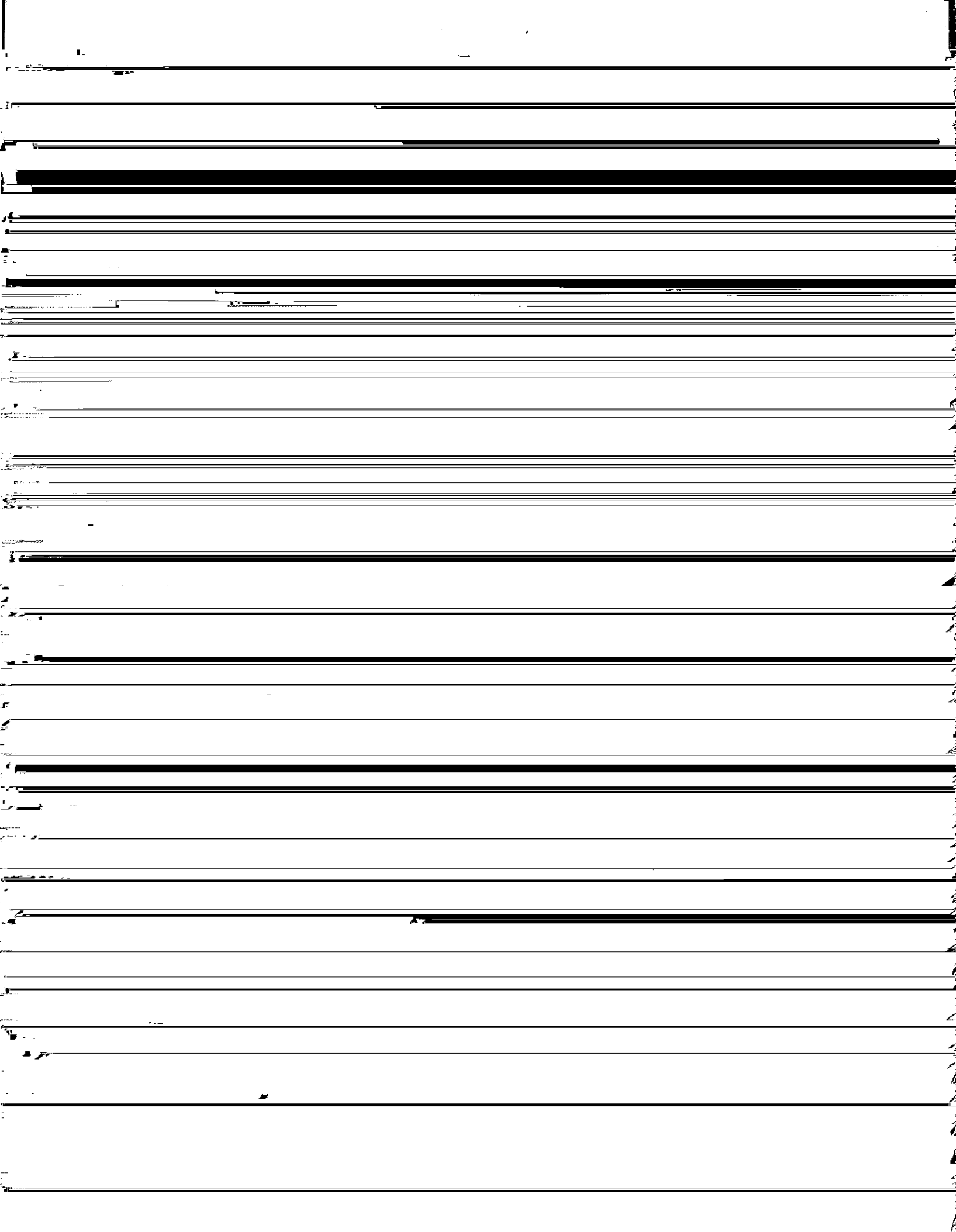
REVIEW OF TEXAS BOOKS

1911

[The body of the page contains numerous horizontal lines, likely representing a table or list of entries, but the text is illegible due to heavy scanning artifacts and noise.]







REVIEW OF TEXAS BOOKS

1911

